

# Product leaflet

**Product**  
Compressed Air Attachment

**Model No.**  
SR 307

**Ordering No.**  
H03-1421

## Product Description

The SR 307 compressed air attachment is designed for connection to Sundström Air Purifying Respirator (APR) half masks and full face masks. This combination is a Supplied Air Respirator (SAR) in Continuous Flow mode (CF), for connection to a compressed air supply. The SR 307 is an accessory that enables a given facepiece to be used as either a Air Purifying Respirator or a Supplied Air Respirator (SAR). The compressed air attachment is especially intended for applications involving heavy and sustained work in environments in which the pollutants have poor warning properties or are particularly toxic.

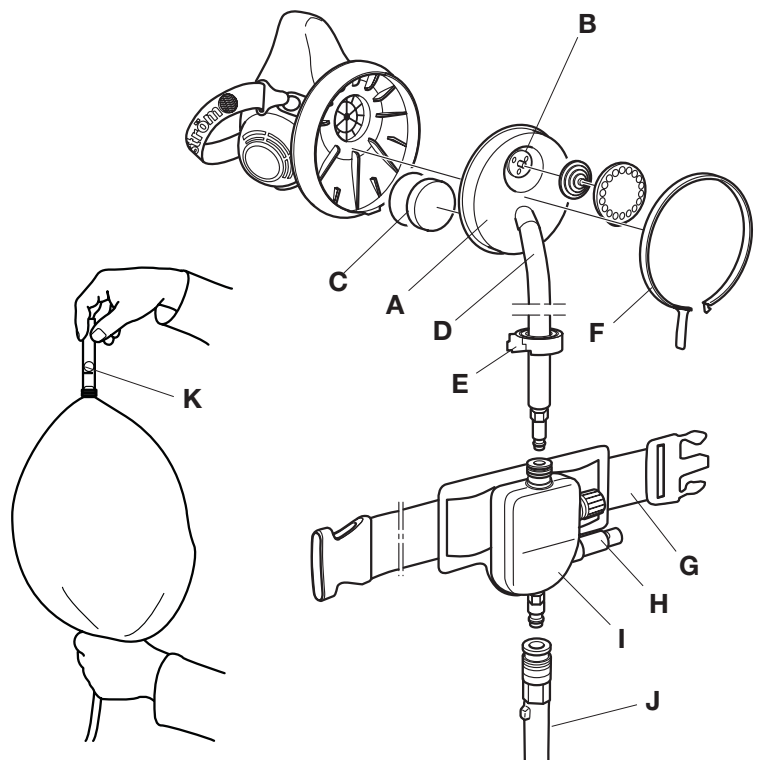
The SR 307 is made of a material which is not liable to give rise to frictional sparking, which enables the attachment to be used in an explosive or flammable environment. The flow meter and warning whistle for temporary and continuous monitoring of the air flow rate are included. Control valve mounted on the user's belt is included.

## Technical specification

	SR 307	42 CFR part 84
<b>Working pressure</b>	58-102 PSI (4-7 bar)	-
<b>Airflow rate</b>	5.3 CFM (150 l/min) to 12 CFM (340 l/min)	4.1 CFM (115 l/min)
<b>Service temperature</b>	14 to 131 °F (-10 to +55 °C), < 90 % RH	-
<b>Storage temperature</b>	4 to 104 °F (-20 to +40 °C), < 90 % RH	-
<b>Weight without control valve</b>	≈ 2.8 oz (80 g)	-
<b>Low flow warning level</b>	5.3 CFM (150 l/min)	-
<b>Protection factor<sup>1</sup></b>		
<b>Half mask</b>	50	-
<b>Full-face mask</b>	1000	-
<b>Approvals</b>	NIOSH 42 CFR part 84	

1) Specified by OSHA and applies generally to all Half mask/Full Face Masks Supplied Air Respirator Continuous flow mode (SAR) when the employer implements a continuing, effective respirator program as required by this section (29 CFR 1910.134).

- A. Connection adapter**
- B. Overflow valve**
- C. Silencer**
- D. Breathing hose**
- E. Retaining clip**
- F. Locking ring**
- G. Belt**
- H. Control valve**
- I. Warning whistle**
- J. Compressed air supply tube**
- K. Flow meter**



**Sundstrom Safety Inc.**  
143 Maple St.  
Warwick, RI 02888

Office: 1-401-434-7300  
Toll Free: 1-877-SUNDSTROM  
Fax: 1-401-434-8300

info@srsafety.com  
www.srsafety.com

**Sundström**   
www.srsafety.com